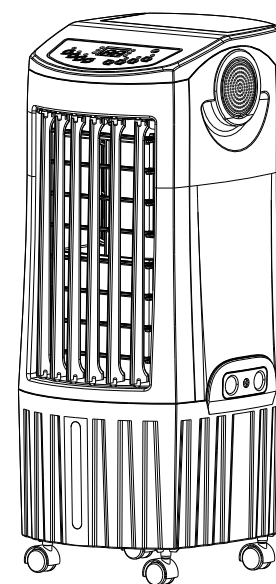
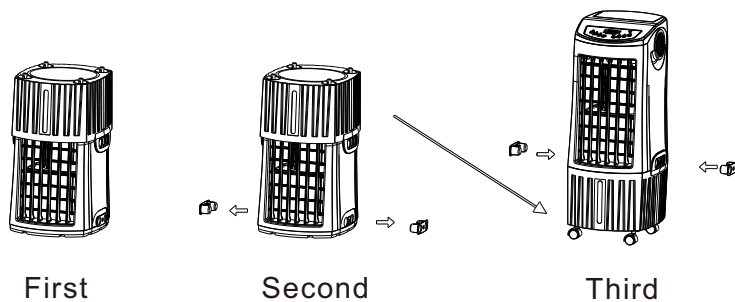


EVAPORATIVE AIR COOLER INSTRUCTION MANUAL

Installation Instruction



Model : LL-19A



Cooling



No polluting



Dustproof

Please carefully read this manual before attempting to use this evaporative air cooler and save it for future reference.

Table of Contents	
Production Features	1
Construction Drawing	2
Spare parts List	2
Technical Parameters	2
Operation Instruction	3
Control Panel and Operation	3
Important Safeguards	4
Maintenance and Cleaning	5
Circuit Diagram	5
Trouble Shooting	5
Guarantee Card	6

Warning

This appliance is not intended for use by persons(including children) with reduced physical, sensory or mental capabilities, or lack of experience and knowledge. Unless they have been given supervision or instruction concerning used of the appliance by a person responsible for their safety. Children should be supervised to ensure that they don't play with the appliance. The company is not responsible for any consequences if any of the above action are in violation.

If there is a failure, please contact the guide on guarantee card, such as the maintenance station can not solve the problem can be directly contacted to our company.

Production Features

● Natural Cool

It cycles the water to blow cool air. It can lower the surrounding temperature and provide you a comfortable environment in hot summer.

● Air Clean, More fresher

Unique water honeycomb washing function effectively removes the gases like formaldehyde, ammonia which comes from the paint, adhesives and plywood of the new decorated houses. It also can filter the cigarette nicotine and freshen the air to care for your health.

● Ionizer

It releases negative ions to activate variety of enzymes to promote the human's metabolism and improve sleep quality. It also can be used for sterilization to freshen the air and care health.

● Separating water tank, detachable filtration mesh

Separating water tank design, water-tight and easy to be cleaned, Clean by water, pour out the water, To prevent bacterial growth. Filter can be removed, clean it by Gentle clean economy and softy brush directly.

● 80W Energy saving, save power, High-efficiency, friendly environment

It used of advanced physical refrigeration technology, water storage capacity of large, long time, can be used for a long time again and again. The entire input power is 80W, the power consumption is only 1/20 of the air conditioner. This product is environmentally home appliances, no fluoride pollution, are open doors and windows type cooling appliances, can be used as a partner of air conditioning products, the effect is better.

● LED digital display & soft touch panel 90° wide range of air output

It's led digital display and soft touch panel, up and down adjust by hand freely, left and right 90° wide range of air output. 3 fan speeds: HIGH-MID-LOW, separate sleep mode, quiet and silent.

● Long distance remote

6.5 meters remote control, 120° wide range receiver.

● Touch button, Beep prompt function

Touch button, Easy to operate. Beep prompt function sound good.

● Memory function

It can memorize the current working status and the memory is not cleaned until the power supply is off.

● Temperature detection and display

It can show the temp at any time.

● 24 hours Timer

1-24 hours timer setting, 24 hours will be closed automatically if no any operation.

● Water shortage Detection

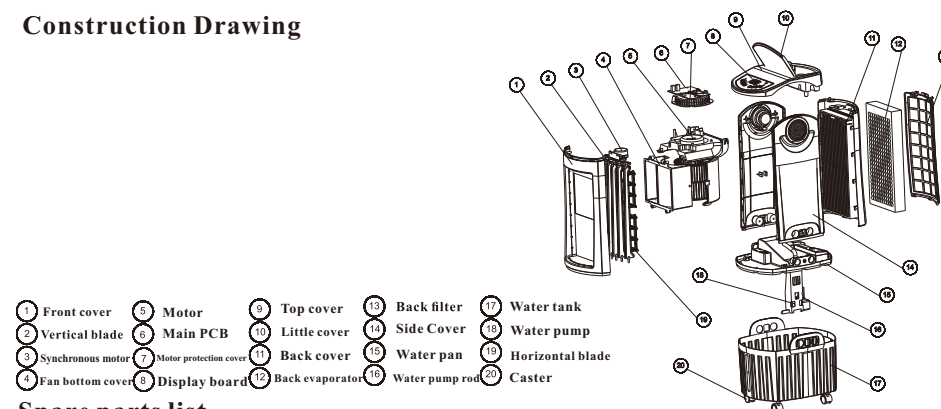
When work with cool function, if water is not enough, "Bi-Bi" alarm sounds, the corresponding light flickers and then the water pump will stop working after 3 seconds if no water added in.

● USB Charging function (optional)

Output current of USB port is 1.8A

Remark: Remote control version (optional): 1. Humidity detection 2. USB charge

Construction Drawing



Spare parts list

No.	Accessory Name	Quantity	Unit
1	Air cooler	1	set
2	Remote controller	1	Pcs(Mechainel model without remote controller)
3	Instruction manual	1	Pcs
4	Guarantee card	1	Pcs
5	Castors	4	Set
6	Power cord	1	Pcs

Technical Parameters

Voltage	220V
Frequency	50Hz
Power	80W
Max Air Flow	1000m3/h
Max Capacity	12L
Net weight	6KGS
Gross weight	7KGS
Production size	290x350x700mm
Packing size	385x325x570mm

Remark: Due to constant development of our production in regards to specification and design, we take reservation for changes without prior notice.

OPERATION INSTRUCTION

- 1、 Pull the unit outwards from the carton and place it on the floor.
- 2、 Check if the spare parts are complete, same as the spare parts list.
- 3、 Place the unit on the floor. take out the wheels to assemble.

Note: Two casters with brake are for the two front holes and casters without brake are for the two back holes at the bottom of the unit.

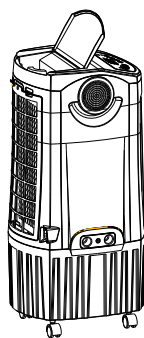
- 4、 Follow up the direction, then add water.(Show as fig 1)

Note:

- Pay attention to the water level indicator to avoid overfilling.
 - Water level must be between the MIN and MAX line.
 - With purifying air function, after some time operation, water in water tank may have smell. It is recommended to change water and clean water tank frequently.
 - Water shortage alarm, when the water level is lower than "MIN" level, then the "Bi-Bi" alarm sound can be heard and the corresponding indicator light flickers, and after adding water to the normal water level, the light is off. then restart the cool function.
- 5.Only use the unit with correct power required .Get the plug pin into power and a small "beep" sound can be heard and the unit is in standby state.

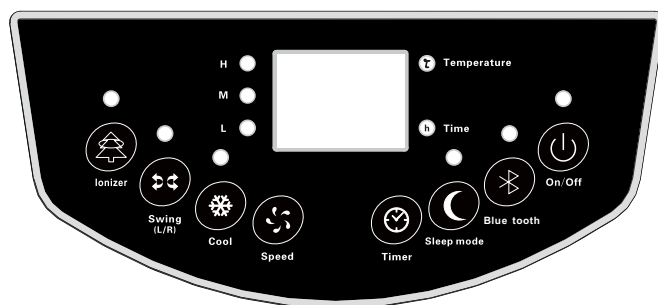
Note :

- To protect against electric shock, do not remove plug by wet hand.
- Unplug from outlet while moving the unit.
- Insert the plug pin into the wall socket and make sure it is connected well

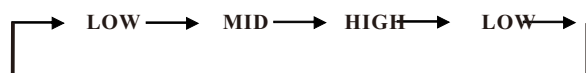


(fig 1)

CONTROL PANEL AND OPERATION



- 1、 **ON/OFF:** In the standby, press this key, then the digital display screen show temperature, and the wind wheel motor at low speed wind start. If the shutdown in the cool function, the machine will delay 15 minutes to dry filter, after automatic shutdown. Press again the button to turn off.
- 2、 **SPEED:** Press this button to select desired fan speed, LOW- MID- HIGH- LOW. in turn. the corresponding speed indicator light will be displayed. the motor delays 5 seconds for the first start



- 3、 **SLEEP MODE:** Sleep mode button is a valid key when power is, press this button, the corresponding indicator light is on and press this button again, then revert to work under the memorized speed.
- 4、 **SWING:**press this button to control the switch of the motor of Vertical wind blade(first on, second off) the corresponding indicator light is on, mean that load output.; Up and Down swing manually.
- 5、 **COOL:** press this button to control the switch of cool function (first on, second off)
- 6、 **IONIZER:**the function start automatically when it is on. press this button to release negative ions into the air(first off, second on)the corresponding indicator light is on.
- 7、 **TEMPERATURE DETECTION:** the temperature automatically display when the machine starts.

IMPORTANT SAFEGUARDED

- 1.Do NOT open , wash and repair the unit by any unqualified person.
- 2.To protect against electric shock, keep the unit dry. Do not immerse in water or any other liquid.
- 3.Unplug while filling water, before cleaning , maintaining or moving the unit.
- 4.Unplug power when not in use
- 5.Do not insert any other objects into the grid of air vent(inlet or outlet) during operation.
- 6.Do not use in flammable and explosive environment. and Avoid direct sunlight.
- 7.Place the unit on the flat surface.
- 8.Do not use outdoors ,indoors only.
- 9.Water level must be between the MIN and MAX line.
- 10.After filling with water, do not lean the unit and avoid moving it, which may cause water overflow the sides of the tank and leak. If the unit needs to be moved a little, push on the side gently.
- 11.Never put the unit side down especially with water inside, if it accidentally falls down, unplug the power immediately and don't restart until it is dry at least for 24 hours.
- 12.Do not place any objects on the top of the unit. Don't cover the unit window while using.
- 13.Unplug the power when cleaning. Don't use petrol, or corrosive cleaner to clean the unit body. For slight dirt on the body, wipe it off with a soft damp cloth. For greasy dirt, squeeze a little toothpaste or mild detergent on a soft damp cloth, and then wipe the dirt off.
- 14.Keep the air vent(inlet or outlet)away from obstacles such as curtains, walls and so on.
- 15.Do not strike or shake the unit body during operation, otherwise, it will stop working automatically. in this case, restart the unit.
- 16.After some time operation, dust and dirt may occur in water tank .it is recommended to change water and clean water tank frequently. If the temperature is below zero in winter, humidify with warm water,.
- 17.Do not put the unit under wall socket.
- 18.After stopping cool, please keep it run for at least 1 hour to blow the honeycomb dry and avoid the mustiness.
- 19.Do not use if any malfunctions, send to service enter for repair.
- 20.Please use the attached accessories, no other programmers or devices are allowed.
- 21.Don't use the unit in the damp environment like bathroom, swimming pool.
- 22.If electric cord is broken, please replace it with the same cord from the manufacturer the service agent.

Maintenance and Cleaning

Note:After long time operation,the filtration mesh becomes clogged with dust and dirt, which will greatly affect the unit's performance.It is recommended to clean the filtration mesh every two week.

Cleaning the filtration mesh

- 1.Pull the plug.
- 2.Loose screw,catch the filtration mesh handle and pull upwards.
- 3.Clean filtration mesh with mild detergent and soft brush.
- 4.Make sure filtration mesh is completely dry before installing.

Cleaning the water tank

- 1.Remove the plug power.
 - 2.Open the hooks on both sides of the tank,pull out of the water tank.
 - 3.Add water into the water tank and clean.
 - 4.Pour out the water and make the water tank keep dry.
- In order to keep greatly effect of cooling,it is recommend to clean the water tank every three months.

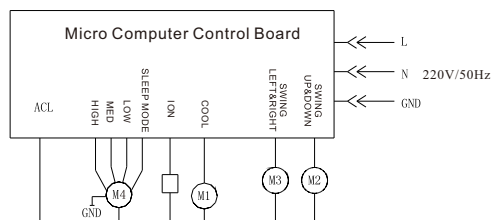
Cleaning the body

Clean the body with a little mild detergent on a soft cloth.

Note:

- **Unplug from outlet before cleaning.**
- **No water on the control panel and the top of the product.**

CIRCUIT DIAGRAM



TROUBLE SHOOTING

If there is something wrong during operation,it may not be the unit's problem.You may check against the following list before sending for repair.

Problems	Possible reasons	Solutions
Not working	<ol style="list-style-type: none"> 1. The plug is not securely inserted into the socket or not connected well. 2.The "ON/OFF" button is not pressed. 	<ol style="list-style-type: none"> 1. Insert the plug pin into the wall socket and make sure it is connected well. 2. Press "ON/OFF" button after plugged.
Cool effect not good	<ol style="list-style-type: none"> 1.Not enough water in water tank 2.Water pump is blocked. 3. Air vent is blocked by dust. 	<ol style="list-style-type: none"> 1.Add water to ensure enough water for pumping 2. Clean water tank and remove the impurities. 3. Clean the dust or foreign objects from the air vent.

Notice:

Please contact our service center or qualified technician for further inspection if have follow problems:

- 1.The problem cannot be found in the list or it continues.
- 2.Foreign substances or water enter into air cooler, causing the air cooler cannot be run.

WARRANTY CARD

MODEL NUMBER		CUSTOMER NAME	
PURCHASE DATE		CONTACT NUMBER	
ADDRESS			
PLACE OF PURCHASE			
MAINTENCE RECORD			

Warranty considerations:

- Please retain this warranty card as proof of guarantee.
- IF a failure occurs under normal operation, you can enjoy warranty service by free within 1 year by warranty cards.
- Beyond the warranty period of the product, our company is willing to provide regular inspection and maintenance,the repair materials and accessories are charged only the cost price.

The following situation cannot enjoy our company free maintenance:

- Cannot show warranty card and state revenue standard invoice.
- Air cooler was not normal use.
- Unauthorized repair, misuse, abuse and change.
- Beyond the shelf life.